



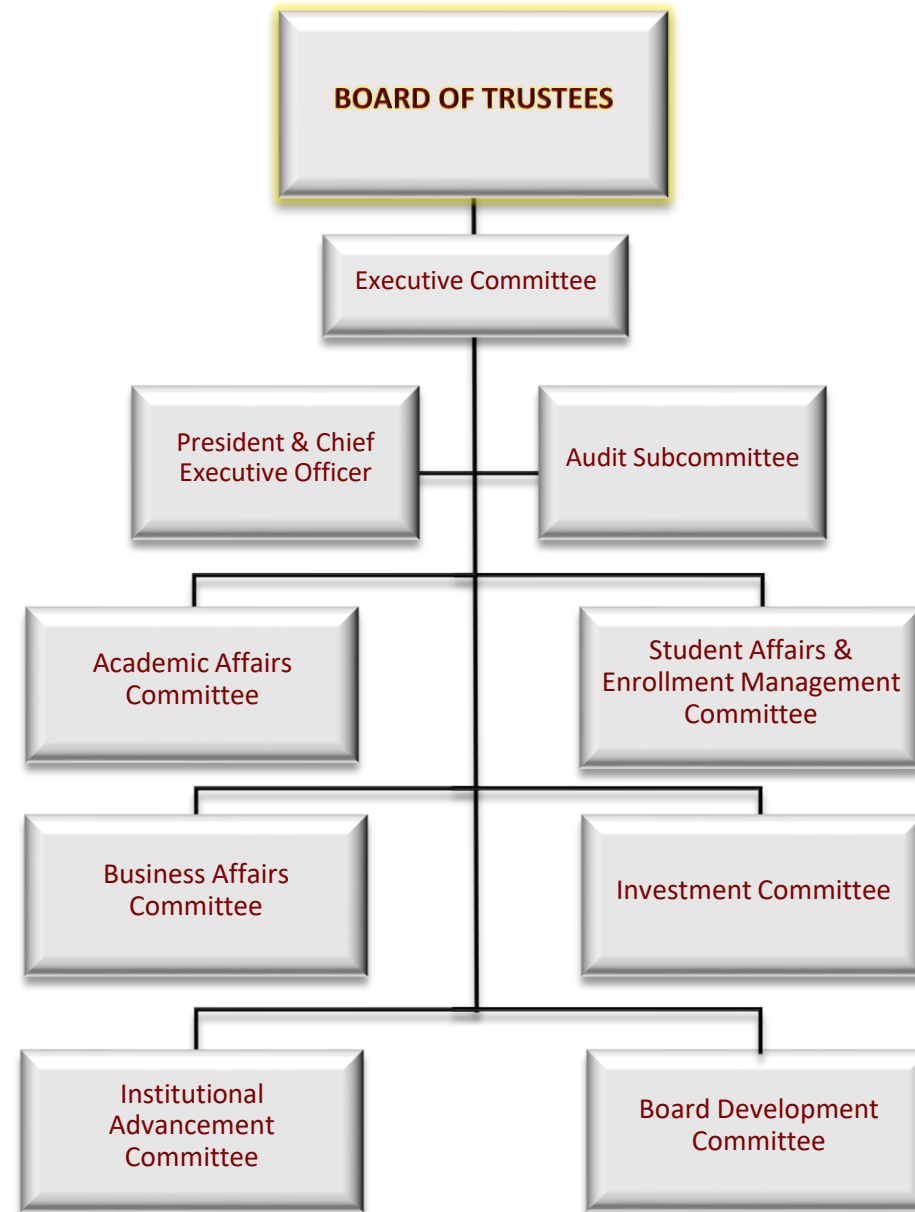
Organizational Charts

Updated Fall 2021



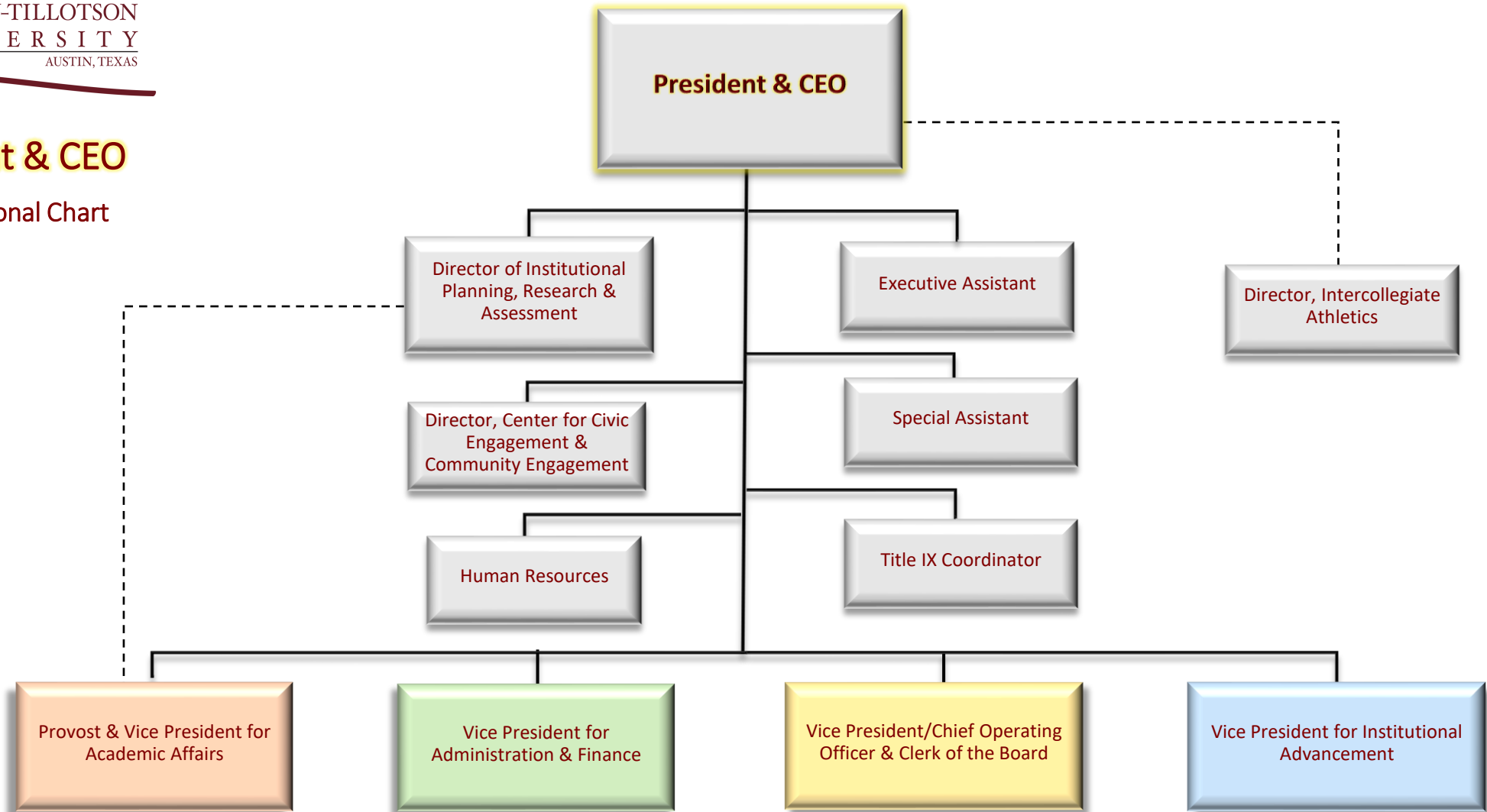
Board of Trustees

Organizational Chart



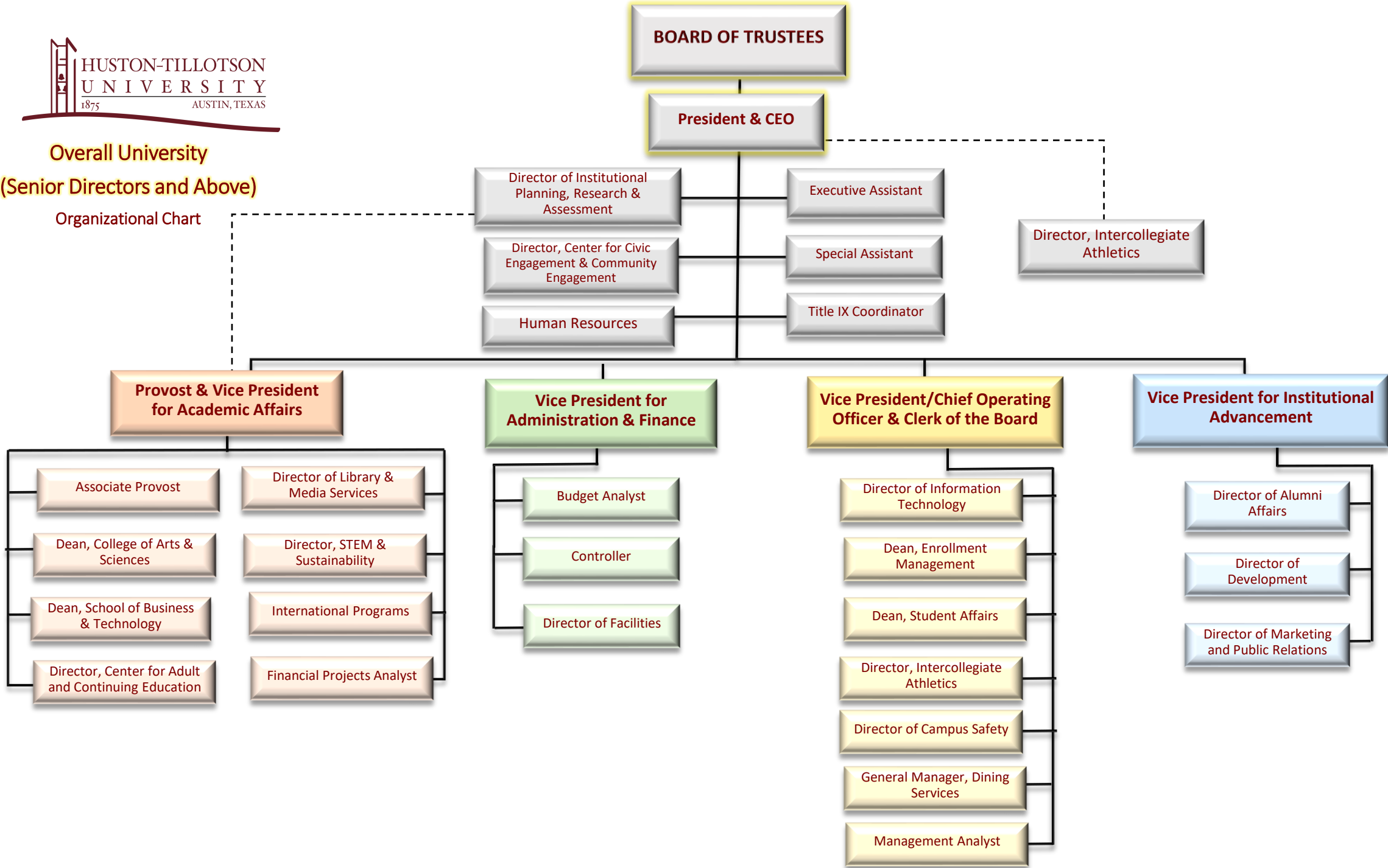
President & CEO

Organizational Chart





**Overall University
(Senior Directors and Above)**
Organizational Chart



Provost & Vice President for Academic Affairs
Organizational Chart

Provost & Vice President for Academic Affairs

Administrative Assistant

Director of Institutional Planning, Research, & Assessment

Associate Provost

Administrative Assistant

Dean, College of Arts & Sciences

Dean, School of Business & Technology

Director, Center for Adult & Continuing Education (CACE)

Director of Library & Media Services

Director, STEM & Sustainability

Director of Sponsored Programs/ Title III

Director of Center for Academic Excellence

Administrative & Data Specialists

Director of Center for Academic Innovation & Transformation (CAIT)

Pre-Award Specialist (2)

Academic Coach (x2)

Coordinator of Writer's Studio

Coordinator of Math Center

Administrative Assistant (x3)

Chair of Department of Humanities & Fine Arts

Chair of Department of Social & Behavioral Sciences

Chair of Department of Kinesiology

Chair of Department of Mathematics

Chair of Department of Educator Preparation

Chair of Department of English

Chair of Department of Natural Sciences

Coordinator of St. David's Program

Administrative Assistant

Chair of the Department of Business Administration

Chair of Department of Computer Science

Center for Entrepreneurship & Innovation (CEI) Assistant

SBT Coordinator

Director of Student Services (ADP)

Academic Advisor (ADP)

Program Coordinator (CACE)

Public Services Librarian

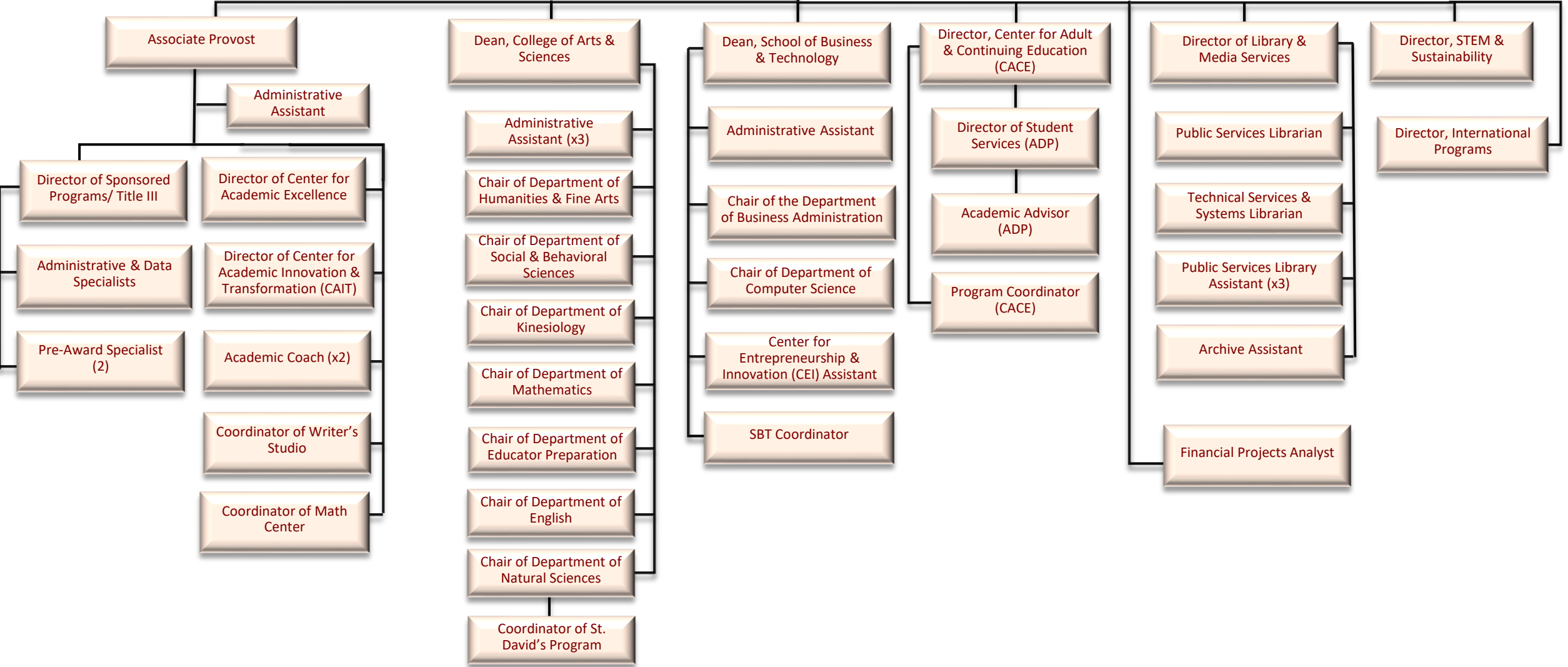
Technical Services & Systems Librarian

Public Services Library Assistant (x3)

Archive Assistant

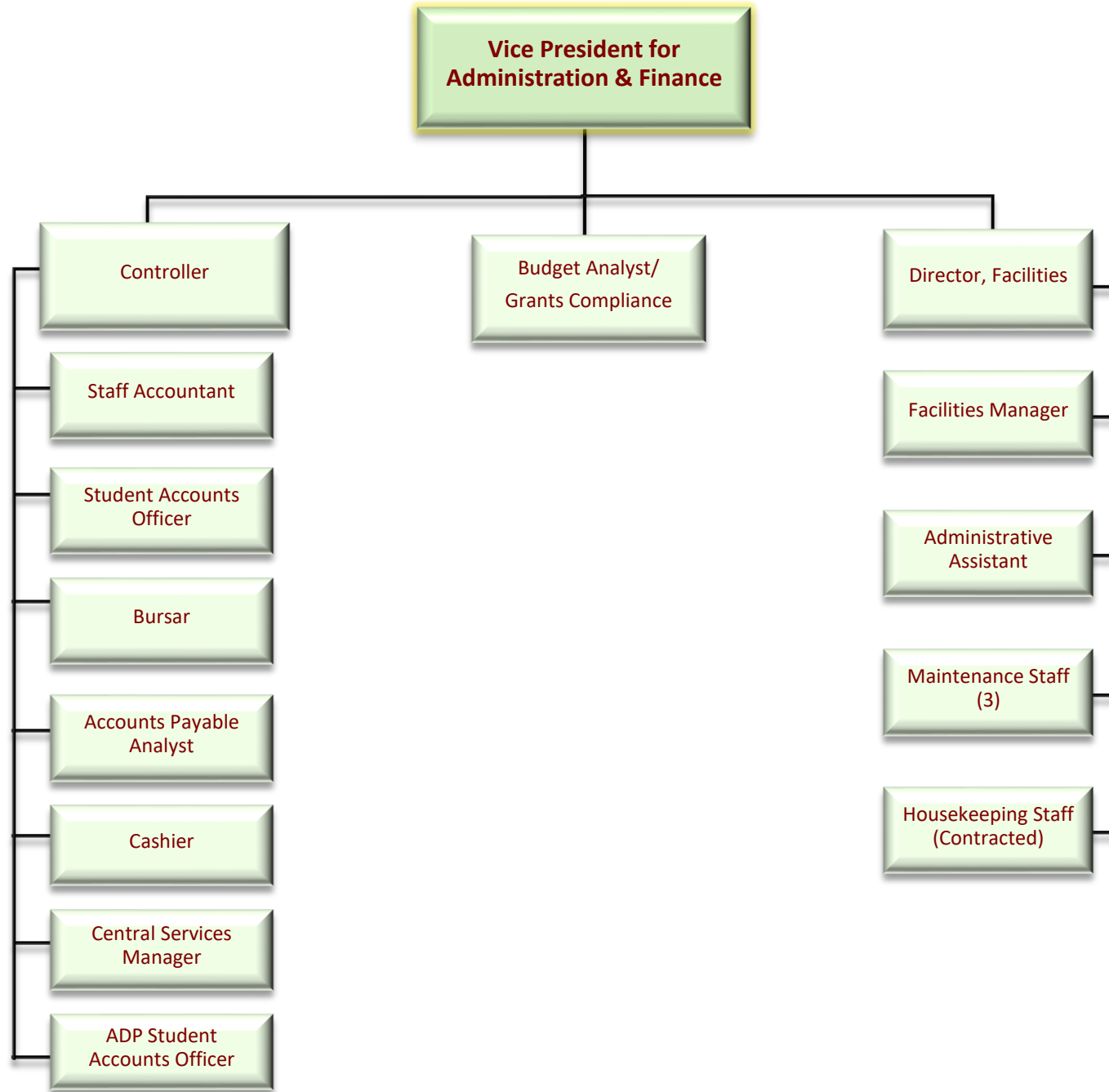
Financial Projects Analyst

Director, International Programs



Vice President for Administration & Finance

Organizational Chart



Vice President/ Chief Operating Officer & Clerk of the Board

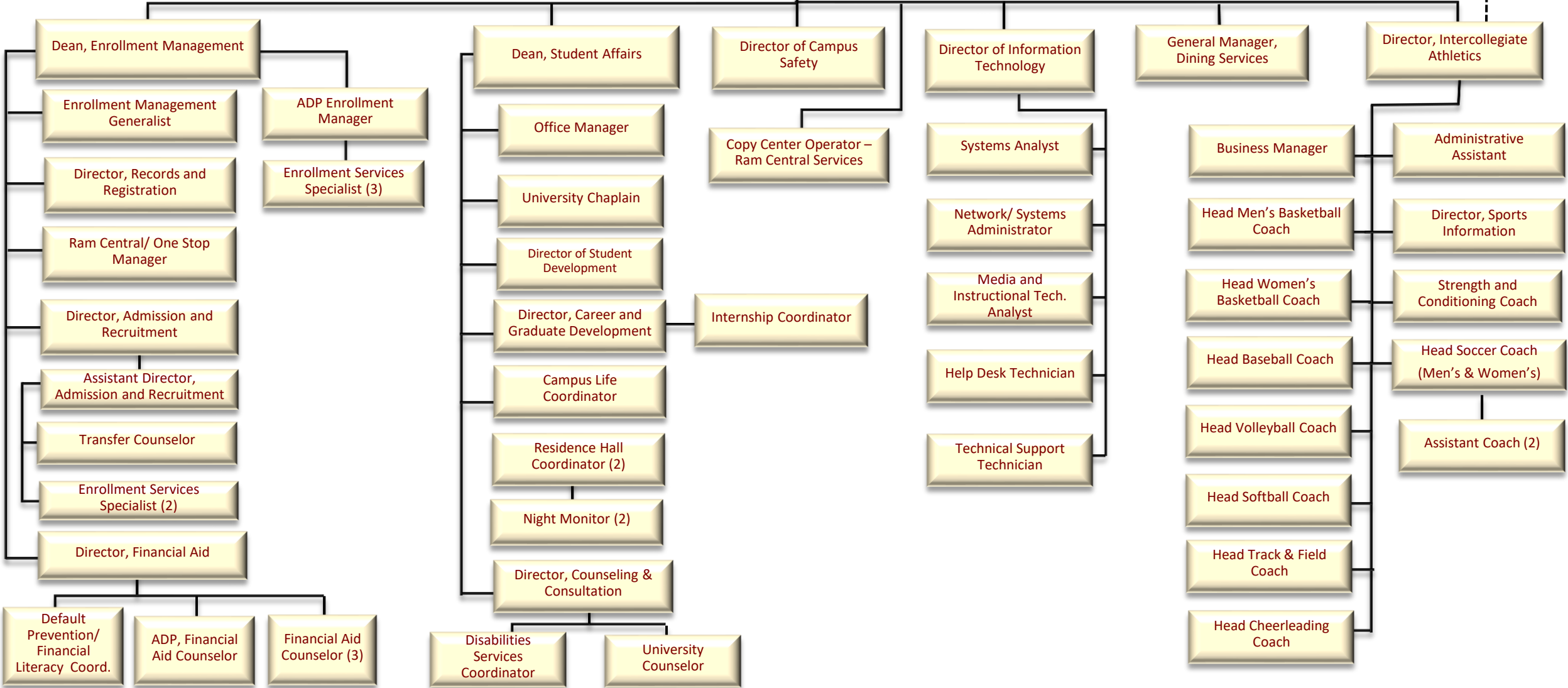
Organizational Chart

Vice President/Chief Operating Officer & Clerk of the Board

President/CEO

Management Analyst

Special Assistant





**Vice President for
Institutional Advancement**
Organizational Chart

